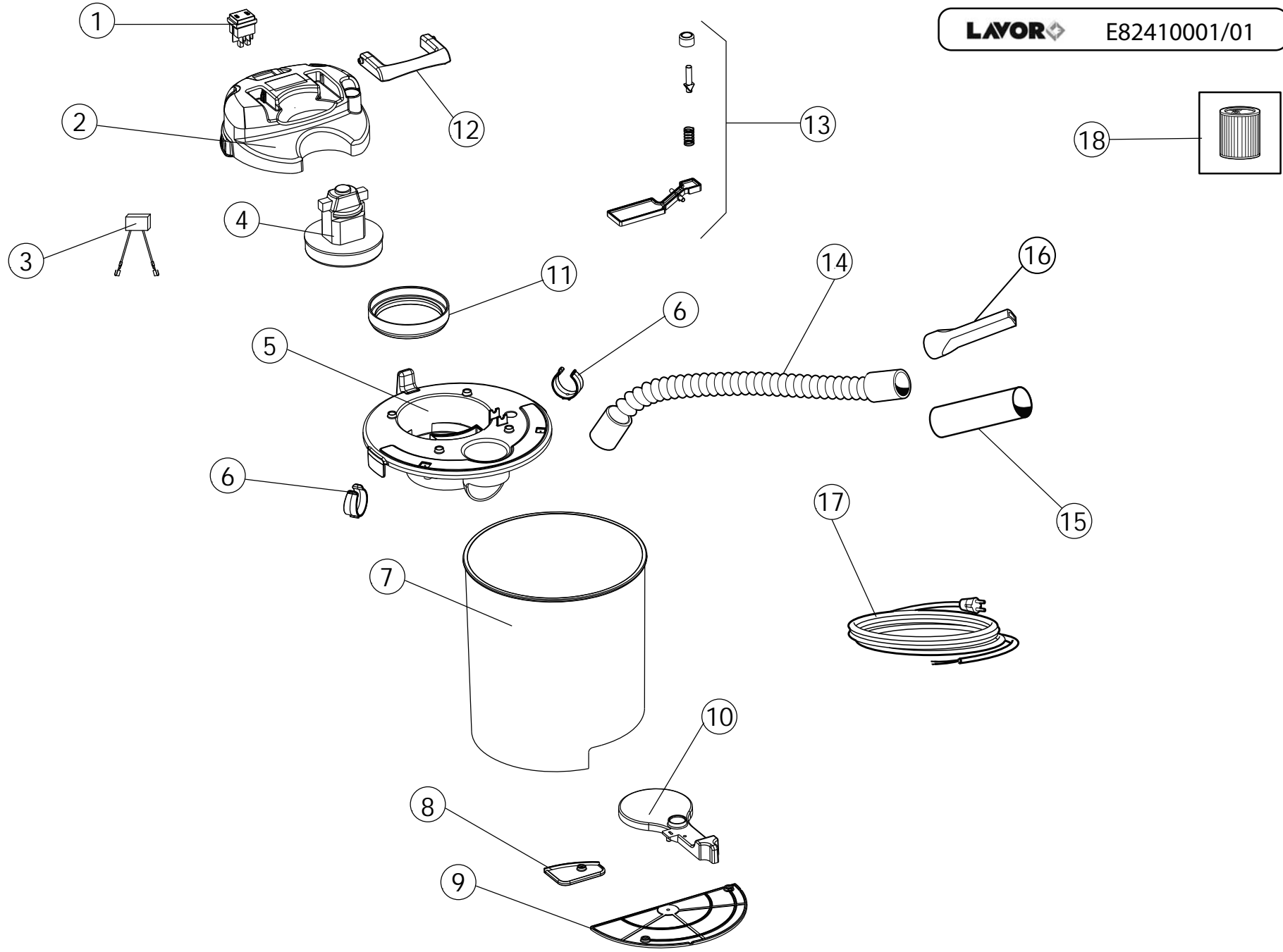


LAVOR

E82410001/01



LISTA RICAMBI

CODICE: 8.241.0001 REV.: 1 DESCRIZIONE: ASPIRACENERE RIU' -G/GR- 220-240/50-60 -EU- LWS

DATA INIZIO VAL.: 06/21/2011 DATA FINE VAL.: 01/01/3000

CODICE GRUPPO: R82410001 REV.: 1 DESCRIZIONE: VACUUM CLEANER

DATA INIZIO VAL.: 06/21/2011 DATA FINE VAL.: 01/01/3000 N. TAVOLA: E82410001/01

CODICE:	DESCRIZIONE:	QTA':	POS:	ORD	EXTR.
3.401.0038	DOUBLE-POLE SWITCH	1	01		X
4.208.0503	GREY COVER VACUUM CLEANER RIU' RAL.7016 (P82.0494)	1	02		
4.012.0259	RADIO INTERFERENCE SUPPRESSOR CAPACIT. MKP X2 0.22mF 275VAC C/FASTON F+M	1	03		
3.755.0092	UNIVERSAL MOTOR SMb 230/50 600 W WITH CABLE L=290mm F/F 6,3 DRY	1	04		X
4.208.0504	GREY MOTOR BASKET VACUUM CLEANER RIU' RAL.7046 (P82.0494)	1	05		
5.212.0102	HOSE HOLDER KIT	1	06		
4.208.0506	GREY TANK VACUUM CLEANER RIU' RAL.7016 (P82.0494)	1	07		
4.208.0533	RETAINER FOR DISCHARGE LEVER (P82.0494) ESP.00	1	08		
4.208.0511	GREY BASE FOR TANK VACUUM CLEANER RIU' RAL.7046 (P82.0494)	1	09		
4.208.0507	YELLOW LEVER DRAIN FOR TANK VACUUM CLEANER RIU' RAL.1018 (P82.0494)	1	10		
4.215.0104	LOWER GASKET FOR SUCTION MOTOR (P82.0476) ESP.00	4	11		
4.208.0534	YELLOW HANDLE RAL.1018 (P82.0405)	1	12		
6.205.0175	KIT SHACKER FILTER RIU'	1	13		
3.753.0083	IRON FLEX HOSE+CONNECTION (1 connect.to Lavor drawing)L=1mt	1	14	X	
3.752.0171	LANCE ALUMINUM ASH	1	15	X	
3.754.0005	LANCE D.35 (SPIVAL 00100002)	1	16	X	
4.012.0226	CABLE H05VV-F 2X0,75 MT.3 SP.SCHUKO rev.02	1	17		
3.752.0233	WASHABLE CARTRIDGE FILTER	1	18	X	